

Bat Informational Paragraph Puzzles

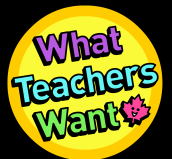
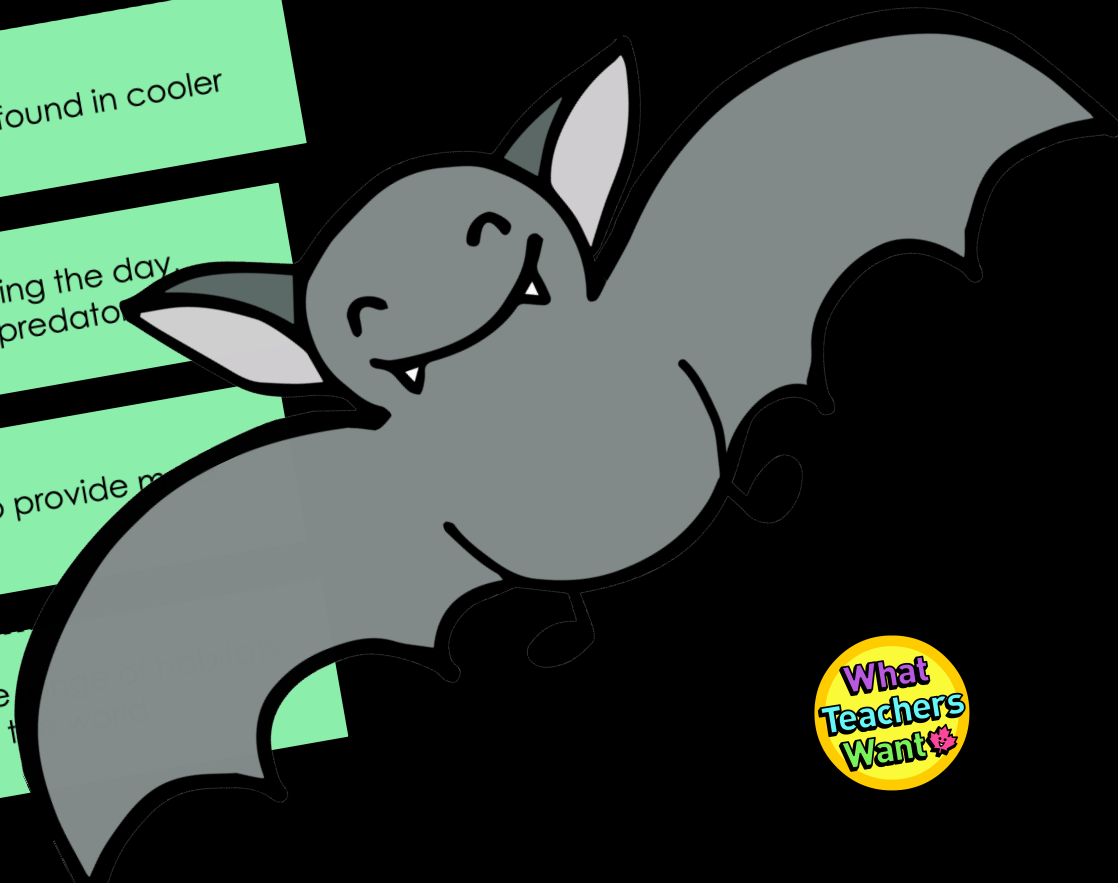
Bats can live in many different habitats, such as forests, caves, and even bat houses.

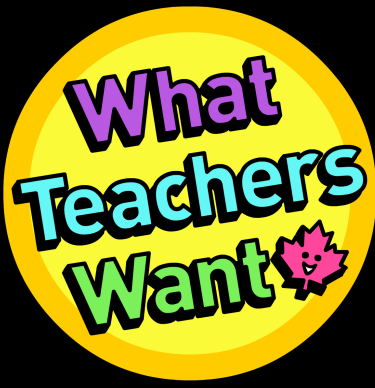
Some bats prefer warm climates, while others are found in cooler regions.

Caves provide a safe place for bats to roost during the day, especially because they are protected from predators.

In some places, people put up bat houses to help provide more roosting spaces.

In conclusion, bats have adapted to live in a wide variety of environments, making them versatile creatures around the world.





Click here to join our newsletter and receive freebies like this science safety passage and word search for grades 2-4.

Science Equipment and Safety

When conducting science experiments, it's essential to use the correct equipment and follow strict safety guidelines. These rules help keep everyone safe and ensure that the experiments are successful. Understanding the purpose of each piece of equipment is the first step in becoming a safe and skilled scientist.

One of the most common pieces of science equipment is the beaker. Beakers are glass containers that are used to mix and measure liquids. They come in different sizes and have measurement marks on the side to show how much liquid is inside. Beakers are essential for many experiments, especially when you need to combine different chemicals. Always handle beakers carefully to avoid spills or breaks.

Goggles and gloves are important safety gear that protect your eyes and hands during experiments. Goggles are worn over your eyes to shield them from splashes, bright light, or fumes. Gloves are worn on your hands to protect your skin from harmful chemicals or hot objects. Before starting any experiment, always check that your goggles fit properly and that your gloves are free of holes.

Another vital tool in the lab is the thermometer. Thermometers are used to measure the temperature of liquids or objects. Knowing the exact temperature is crucial in many experiments because temperature can change how chemicals react. Always read the thermometer carefully and never touch it with your bare hands if it's been in something hot or cold.

Following safety rules is just as important as using the right equipment. Always read and understand the instructions before beginning an experiment. Never touch or taste any chemicals, and be sure to keep your work area clean and organized. If an accident happens, tell your teacher or adult immediately. By following these rules and using science equipment correctly, you can enjoy learning and experimenting in a safe and fun way.

Click on an image to be taken to the product page.

Haunted House Art & Writing Project

Roll and Draw a Gingerbread House

Bubble Tea Paragraph Puzzles

Bubble tea, also known as bubble tea, is a fun and tasty drink with several key ingredients.

The base of bubble tea is usually a strong tea, like black or green tea, which gives it a rich flavor.

The tea is mixed with milk or a dairy-free alternative to make it creamy and smooth.

Special feature of bubble tea is the chewy tapioca pearls, which are made from cassava root and add a fun texture.

Finally, the drink is sweetened with sugar or honey, making it a delicious treat!

Paragraph Puzzle Bundle

PUMPKIN Paragraph Puzzles

Cacti Paragraph Puzzles

Free!

Mother's Day

Coffee Filter & Markers Mountain Art Project

Latitude & Longitude

• Games • Activities • Doodle Notes • Maps

Digital & PDF

MOVIE MUNCHIES

Continents & Oceans

Digital & Printable

Worksheets

Activities

Games

Onomatopoeia Art Activity, Foldable, Poster

Thank you to: the following for fonts and clip art:



Creative Lab

Teachers's Notes

Printing: For durability, I recommend printing these paragraph puzzles on cardstock. If you'd like to reuse them, laminating is a great option. Alternatively, you can use regular copy paper if that's more convenient.

Cutting: After printing, cut out the individual sentence strips. Once they're cut, you're ready to use them in various classroom activities!

Adaptations: Strategically hand out pieces of puzzles one and two (see next page) to struggling students.

Ways to Use Paragraph Puzzles

1. Whole Class Activity

- Give each student one sentence strip.
- Students move around the room, talking with peers to find sentences that fit together to form a complete paragraph.
- Once they've found their group, they work as a team to arrange the strips into the correct order.
- When all groups are finished, check their work. If you have fewer than 30 students, place extra strips on a table for students to pick from as needed.

2. Partner Work Station

- Set up a station with a few paragraph puzzles.
- In pairs, students work together to arrange the sentence strips in the correct order to form paragraphs.
- This is a great collaborative activity that reinforces paragraph structure and teamwork.

3. Independent Work

- Students can work independently to sort and arrange the sentences from all six puzzles.
- This is an excellent option for students who need extra practice with organizing paragraphs or for early finishers looking for a challenge.

4. Extend Learning

- Once puzzles are complete students can generate an idea for the title or find the main idea. Suggestion for each puzzle are given on the next page.

Bats are unique because they are the only mammals that can fly.

Like all mammals, they have fur and feed their babies milk.

For example, a baby bat is called a pup and stays with its mother until it can fly.

Just like other mammals, bats are warm-blooded, which means they can keep their bodies warm even in cooler temperatures.

As a result, bats are very special creatures that combine mammal traits with the ability to fly.